

## DS-A82024D

### Hybrid Storage Area Network



- Modular and No-Cable Design
  - Dual Controller
  - Real-Time Cache
  - Backup Battery Unit (Optional)
  - 64-Bit Multi-Core Processor
  - PCI-E 2.0 Bus
  - Four 1000M Ethernet Interfaces per Controller
  - SAS Interface for Storage Enclosure
  - High-Density Chassis. 4U Chassis: 24 HDDs
  - Detection Before Operation
  - Detection During Operation
  - Fault Repair
  - RAID 0, 1, 3, 5, 6, 10, 50
  - Global and Local Hot Spare
  - Quick RAID Building
  - Up to Two Storage Enclosures Cascadable Behind a Single SAS Port
  - Synchronous Backup of Key Information in System Disk and HDD
  - RAID-Based Tamper-Proof Data Technology
  - Auto Data Synchronization Between Devices
  - CPU Load Balance
  - Auto Fan Tuning
  - Quick Configuration
  - Various Alarm Management
  - SADP Protocol Supported
  - SNMP Supported
  - Space Pre-Allocation Strategy
- Direct Storage for Video Stream and Picture Stream
  - Supports Direct IP Camera/DVR/NVR Streaming
  - Supports Camera Access through RTSP, ONVIF, and PSIA Protocols
  - Supports Alarmed/Scheduled/Manual Recording
  - N+1 Technology
  - Automatic Network Replenishment (ANR), Timely Uploading, and Video Loss Alarm
  - Key Video Locking
  - Supports Direct Streaming and IPSAN Modes
  - Search, Play and Download Videos by Video Type

The DS-A82024D is a Hybrid SAN (Storage Area Network) that is equipped with a dual-controller structure. The Hybrid SAN product creates a network that accesses data storage servers, integrates Hikvision's unique direct video streaming technology, and also supports IPSAN/FCSAN.

This flexible, cost-effective solution features ONVIF-support to third-party cameras, support for RTSP and SIP protocols, and extended data retention.

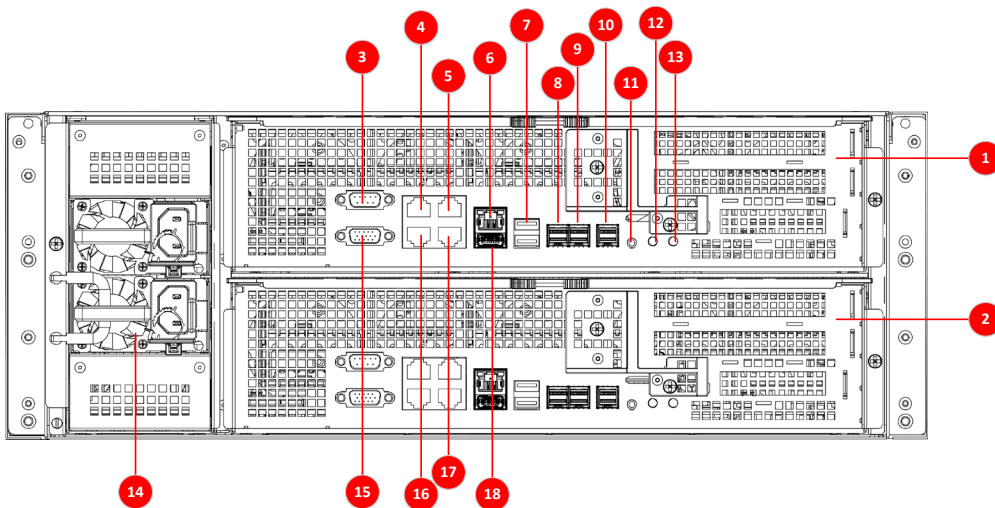
Hikvision's Hybrid SAN systems do not require a recording server, which makes it a truly simple, flexible, and budget-friendly application.

**Available models:** DS-A82024D

# Specifications

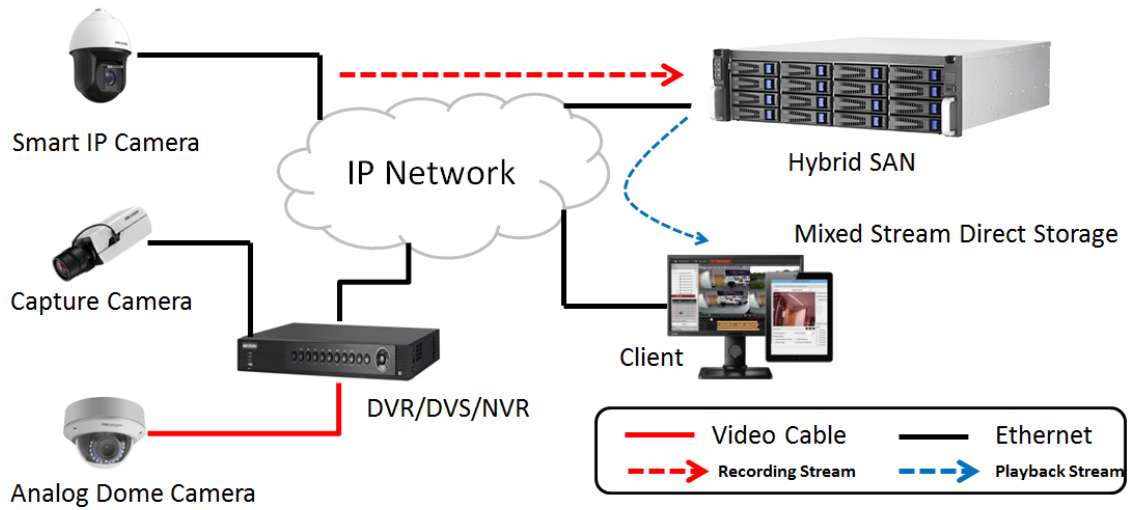
DS-A82024D	
<b>Performance</b>	
Direct Streaming Mode: Video (2 Mbps) + Picture	448-ch (recording + playback)
IPSAN	256-ch (recording + playback)
<b>Controller</b>	
Controller	Dual controller
Processor	64-bit multi-core processor
Cache per Controller	8 GB (extendable to 32 GB)
<b>HDD</b>	
HDD Slot	24
Interface and Capacity	SSD (optional), SAS/up to 12 TB
Hot-Swapping	Supported
HDD Supported	Single, RAID (enterprise hard disk)
RAID	RAID 0, 1, 3, 5, 6, 10, 50, JBOD, Hot-Spare
<b>Network</b>	
Protocol	iSCSI, RTSP, ONVIF, PSIA
<b>Interfaces</b>	
Data Network Interface per Controller	4, 1000M Ethernet interface (4 × GbE or 2 × 10GbE is extendable)
Management Network Interface	1, 1000M Ethernet Interface/Controller
MiniSAS Interface	Supported
VGA per Controller	1
USB per Controller	3
<b>General</b>	
Power Supply	Redundant (AC is optional)
Consumption (with HDDs)	<ul style="list-style-type: none"> <li>Working: ≤507 W (1729 BTU with 24 HDDs);</li> <li>Rated: ≤800 W</li> </ul>
Environment Temperature	<ul style="list-style-type: none"> <li>Working: 41° to 95° F (5° C to 35° C)</li> <li>Storage: -4° to 158° F (-20° C to 70° C)</li> </ul>
Environment Humidity	<ul style="list-style-type: none"> <li>Working: 20% to 80% RH (non-condensing);</li> <li>Storage: 5% to 90% RH (non-condensing)</li> </ul>
Chassis	19" 4U
Dimensions (W x D x H)	17.6" x 6.8" x 21.7" (447 mm x 172 mm x 550 mm)
Weight (without HDDs)	≤73.9 lbs (33.5 kg)

# Physical Interfaces



1.	Controller B	10.	SAS Interface 3
2.	Controller A	11.	COM Interface
3.	RS-232 Interface	12.	FN Button
4.	Data Network Interface 3	13.	Power Button
5.	Data Network Interface 4	14.	Power Module Interface
6.	Management Network Interface	15.	VGA Interface
7.	USB Interface	16.	Data Network Interface 1
8.	SAS Interface 1	17.	Data Network Interface 2
9.	SAS Interface 2	18.	USB Interface

## Typical Application



## Hikvision Tested and Recommended HDDs

HDD Model	Capacity (TB)	HDD Model	Capacity (TB)
ST12000NM0038	12	ST4000NM0125	4
ST10000NM0528	10	ST6000NM0095	6
ST10000NM0096	10	HUH721212AL5200	12
ST8000NM0075	8	HUS728T8TAL5204	8
ST8000NM0156	8	HUS726T4TAL5204	4
ST1000NM0045	1	HUS726T6TAL5204	6
ST2000NM0045	2	ST6000NM0034	6
ST3000NM0025	3	ST4000NM0034	4
ST4000NM0025	4	ST2000NM0024	2
ST2000NM0135	2		